

Attention All Sportsmen –Volunteers Needed!

Volunteers needed, to re-build a wildlife water catchment on the weekend of March 26th and 27th, 2011. The Arizona Game and Fish Department will be re-building the **Mineral Mountain Water Catchment #882** in unit 37B, and we would greatly appreciate your help. We will be camped out in the area for the weekend, if you would like to join us please feel free. If you are interested in helping out or have any questions about the project, please contact **Kriselle Colvin** at, (480) 354-5643 or kcolvin@azgfd.gov. Please RSVP if possible –Thanks.

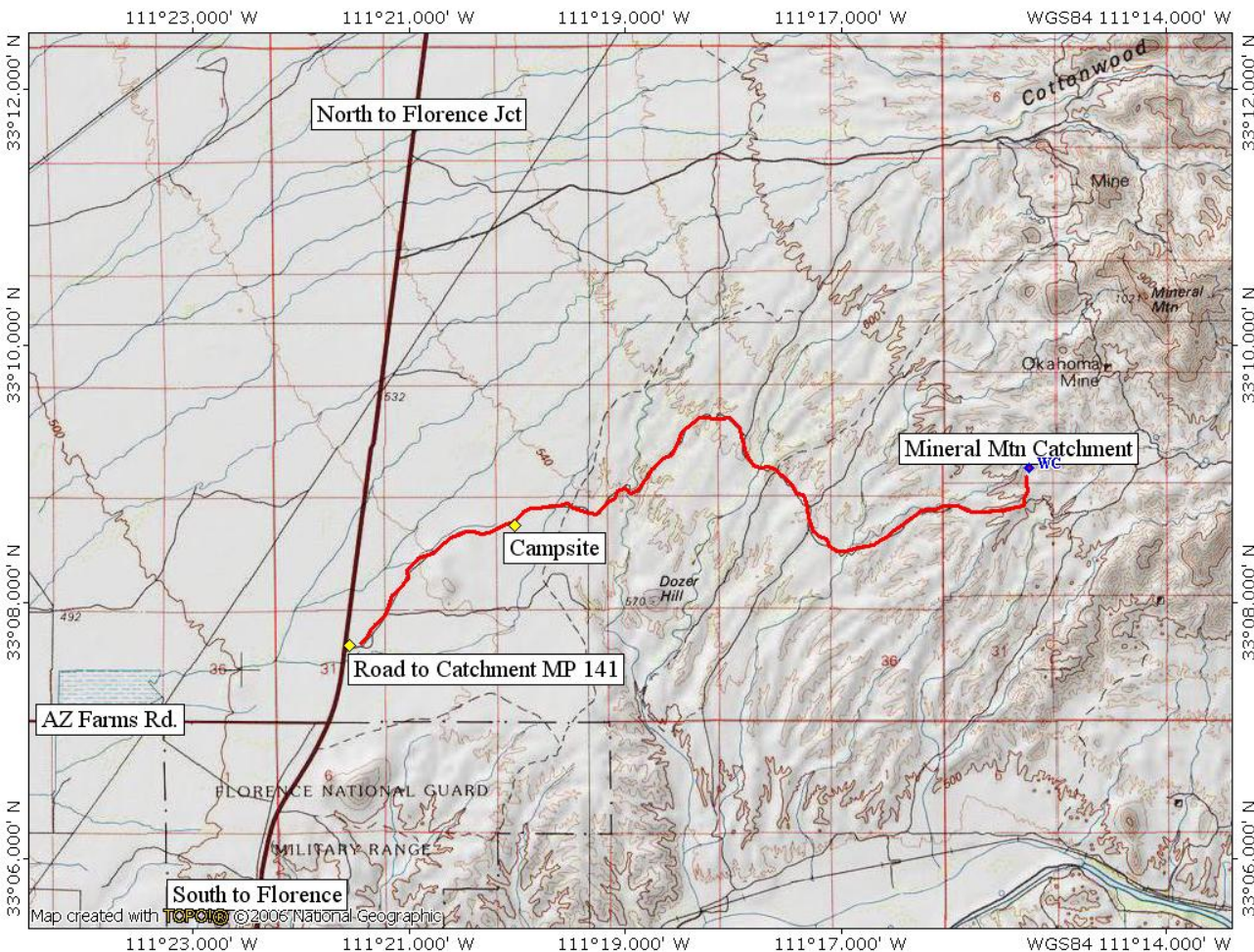
Directions: From Highway 79 (South of Florence Junction and North of Florence) turn east on the dirt road located at MP 141. Stay on that road for approx 7.5 miles. Turn north at the marked road (I will post a sign). Follow that “road” north for about 1/4 mile to the catchment.

Coordinates: 33,09.047N
111,15.266W

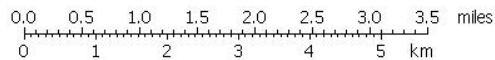
* 4 wheel drive or high clearance vehicle is recommended. You can drive right up to catchment fence with appropriate vehicle

Please bring: food (for the day or for the weekend if you plan on camping), lots of water, gloves, sunscreen, any catchment and/or fence building equipment you have on hand

Recommended attire: pants, good shoes or boots, long sleeve shirt, hat



Map created with ©2006 National Geographic



TN MN
10 1/2°
02/09/11